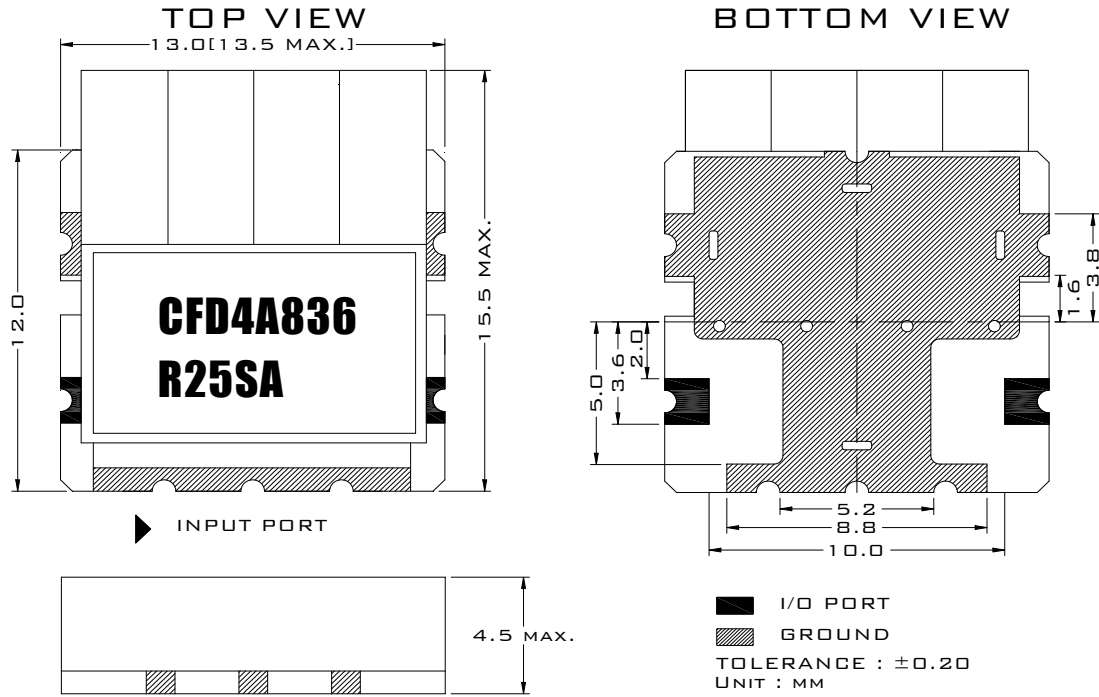




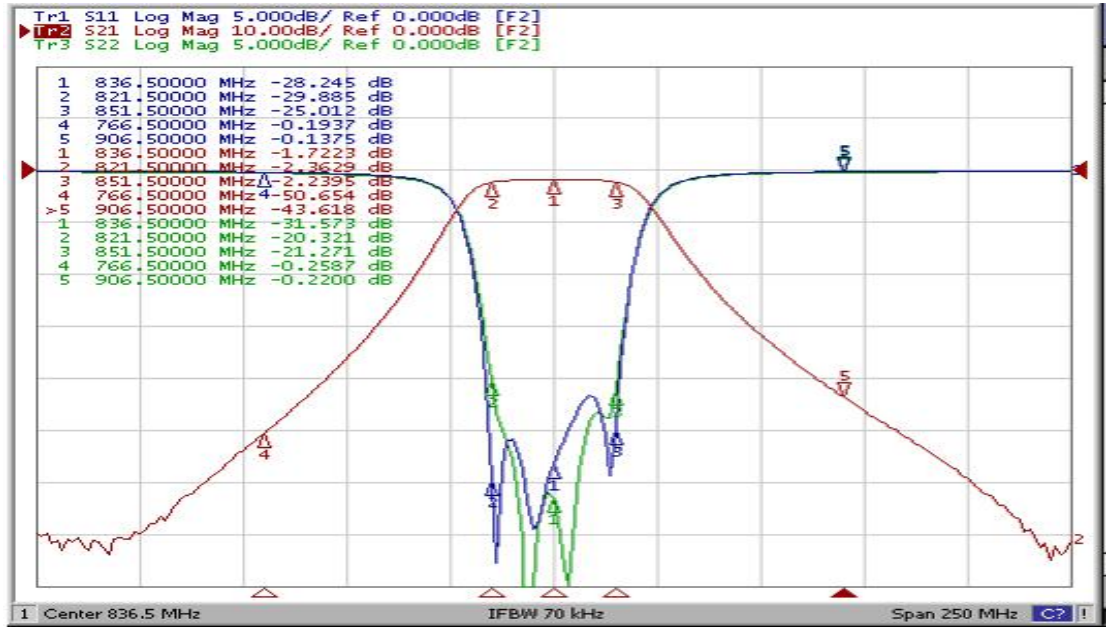
Electrical Specification

| ITEMS                                                                                                        | SPEC                   | UNIT   |
|--------------------------------------------------------------------------------------------------------------|------------------------|--------|
| Center Frequency [fo]                                                                                        | 836                    | MHz    |
| Bandwidth [BW]                                                                                               | fo ±12.5 [823.5~848.5] | MHz    |
| Insertion Loss in BW                                                                                         | 2.5                    | dB max |
| Ripple in BW                                                                                                 | 0.8                    | dB max |
| Return Loss in BW                                                                                            | 18.0                   | dB min |
| Attenuation<br><input checked="" type="checkbox"/> Absolute Value<br><input type="checkbox"/> Relative Value | 40.0dB min @ 766.5     | MHz    |
|                                                                                                              | 20.0dB min @ 906.5     | MHz    |
|                                                                                                              | dB min @ fo ± [ ~ ]    | MHz    |
|                                                                                                              | dB min @ fo ± [ ~ ]    | MHz    |
| Group Delay Variation                                                                                        |                        | ns max |
| Input Power                                                                                                  |                        | W max. |
| In/Out Impedance                                                                                             | 50 Ω                   |        |
| Operation Temperature Range                                                                                  | -40°C to +85°C         |        |

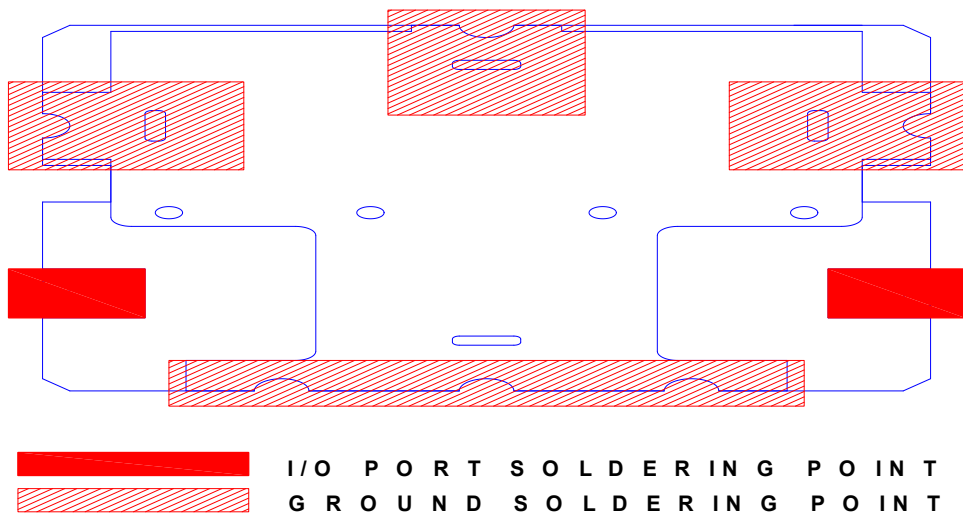
 Mechanical Specification



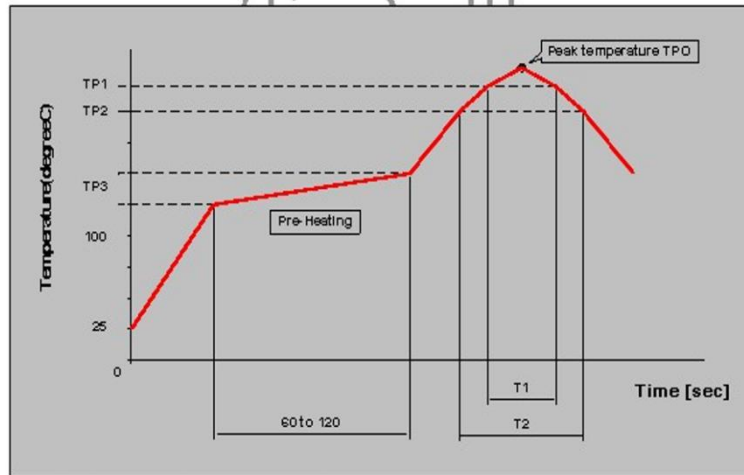
## Plot Data



## Recommended PC Board Pattern



**Soldering Condition**



Measuring point of temperature : IN-OUT Terminals of The Device

Reflow Soldering : Both Convection and Infrared Rays, Hot Air and Hot Plate

| Reflow standard condition                | TPO (°C) | TP1 (°C) | T1 (s)   | TP2 (°C) | T2 (s) | TP3 (°C)   |
|------------------------------------------|----------|----------|----------|----------|--------|------------|
| Sn-3Ag-0.5 solder                        | 245±5    | 220      | 30 to 60 | —        | —      | 150 to 180 |
| Test condition of reflow heat resistance | 260±5/0  | 240      | 20       | 220      | 70     | 150 to 180 |