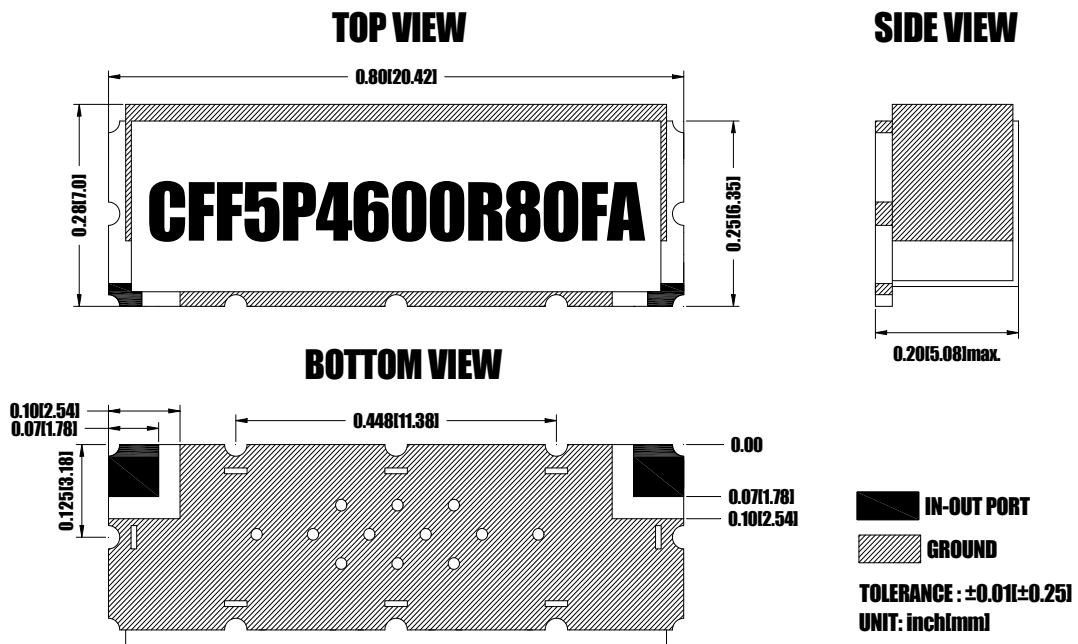


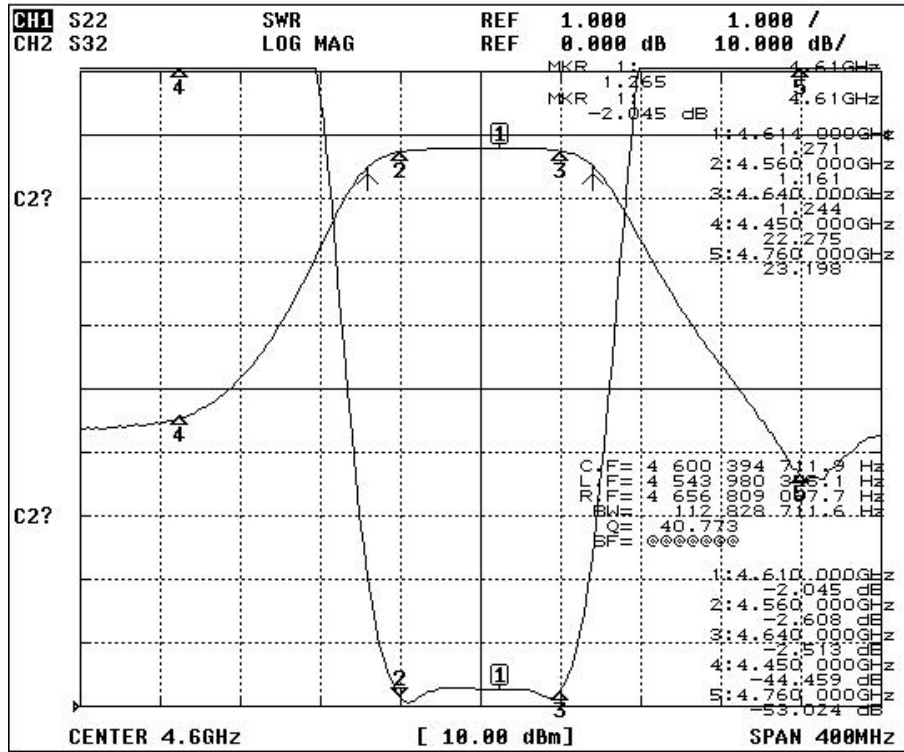
Electrical Specification

ITEMS	SPEC	UNIT
Center Frequency [fo]	4600.0	MHz
Bandwidth [BW]	fo ±40.0 [4560~4640]	MHz
Insertion Loss in BW	3.5	dB max
Ripple in BW	1.0	dB max
Return Loss in BW	10.0	dB min
Attenuation <input type="checkbox"/> Absolute Value <input checked="" type="checkbox"/> Relative Value	40.0 dBc min. @ fo - 150 [ 4550 ]	MHz
	40.0 dBc min. @ fo + 150 [ 4760 ]	MHz
	dBc min. @ fo ± [ ]	MHz
	dBc min. @ fo ± [ ]	MHz
Group Delay Variation		ns max
Input Power		W max.
In/Out Impedance	50 Ω	
Operation Temperature Range	-40°C to +85°C	

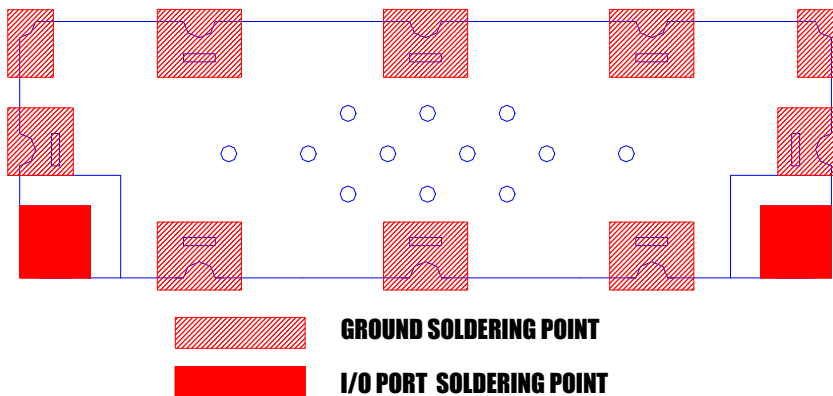
Mechanical Specification



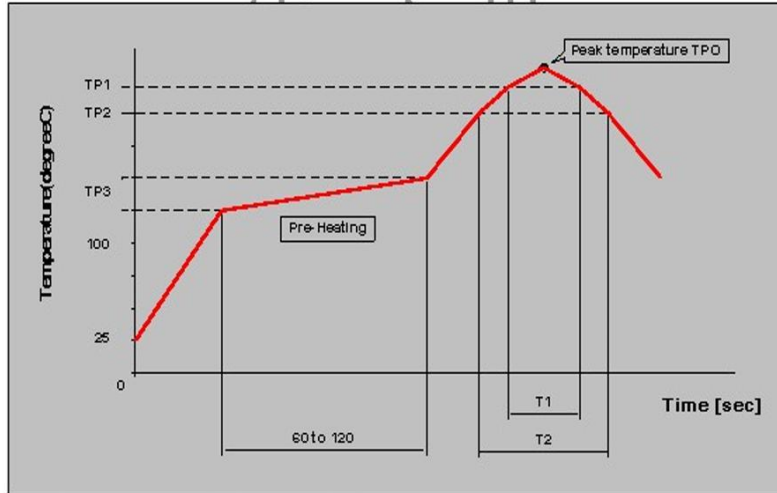
Plot Data



Recommended PC Board Pattern



 **Soldering Condition**



Measuring point of temperature : IN-OUT Terminals of The Device

Reflow Soldering : Both Convection and Infrared Rays, Hot Air and Hot Plate

Reflow standard condition	TP0 (°C)	TP1 (°C)	T1 (s)	TP2 (°C)	T2 (s)	TP3 (°C)
Sn-3Ag-0.5 solder	245+/-5	220	30 to 60	—	—	150 to 180
Test condition of reflow heat resistance	260+5/-0	240	20	220	70	150 to 180