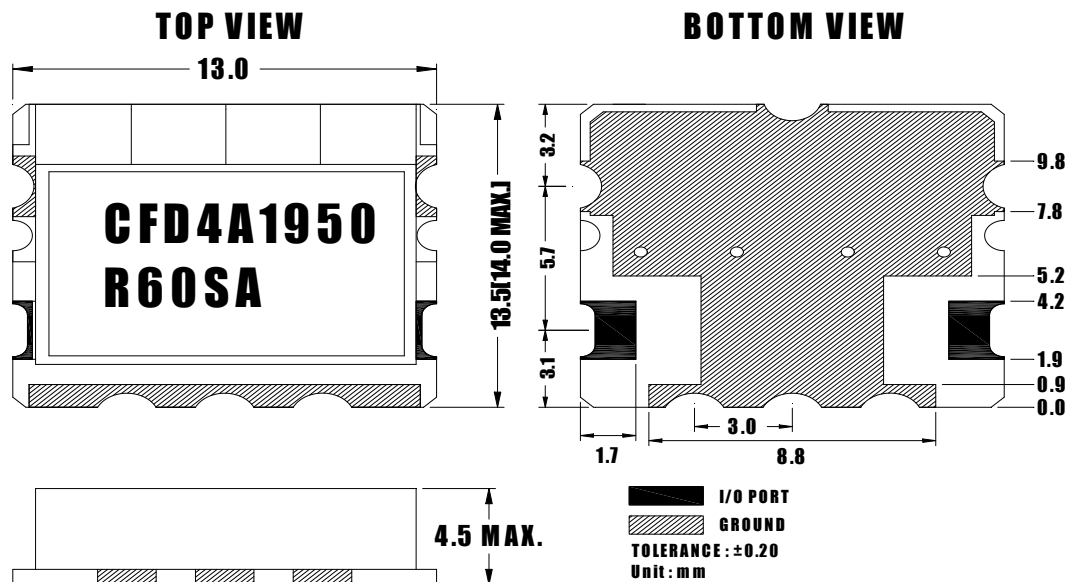


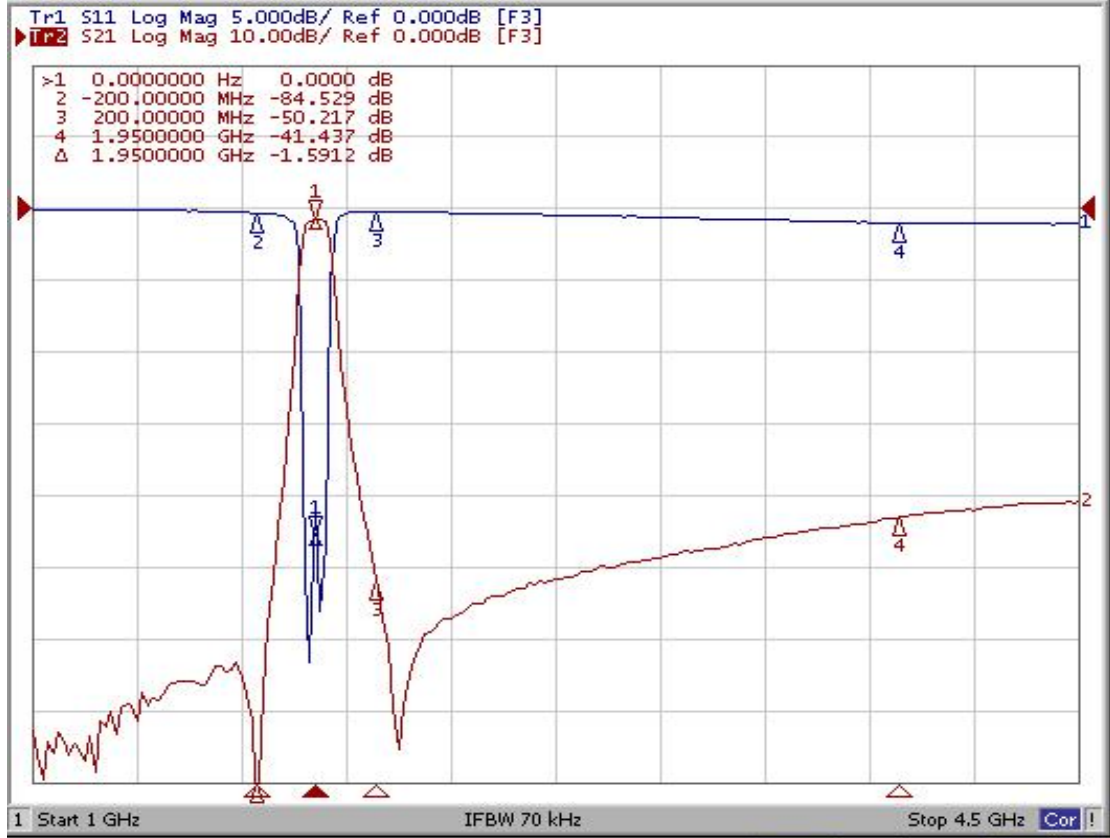
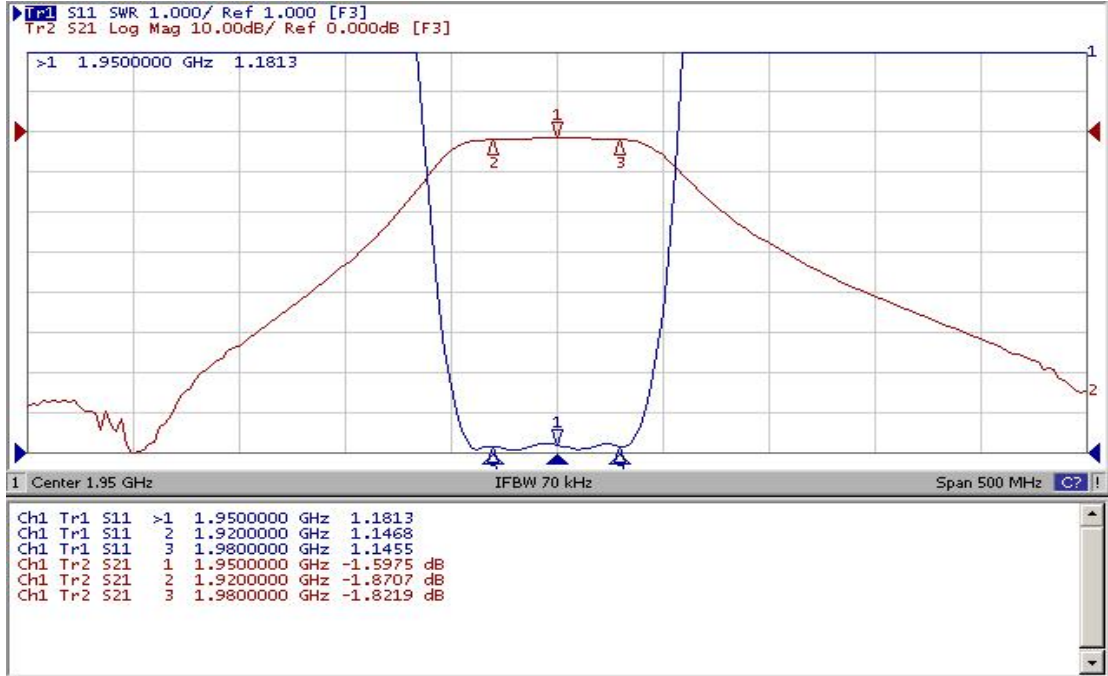
Electrical Specification

| ITEMS                                                                                                        | SPEC                              | UNIT   |
|--------------------------------------------------------------------------------------------------------------|-----------------------------------|--------|
| Center Frequency [fo]                                                                                        | 1950                              | MHz    |
| Bandwidth [BW]                                                                                               | fo ±30.0 [1920 ~ 1980]            | MHz    |
| Insertion Loss in BW                                                                                         | 2.0                               | dB max |
| Ripple in BW                                                                                                 | 0.5                               | dB max |
| Return Loss in BW                                                                                            | 15.0                              | dB min |
| Attenuation<br><input type="checkbox"/> Absolute Value<br><input checked="" type="checkbox"/> Relative Value | 40dBc min @ fo ± 200[ 1750~ 2150] | MHz    |
|                                                                                                              | dBc min @ fo ± [ ~ ]              | MHz    |
|                                                                                                              | dBc min @ fo ± [ ~ ]              | MHz    |
|                                                                                                              | dBc min @ fo ± [ ~ ]              | MHz    |
| Group Delay Variation                                                                                        |                                   | ns max |
| Input Power                                                                                                  |                                   | W max. |
| In/Out Impedance                                                                                             | 50 Ω                              |        |
| Operation Temperature Range                                                                                  | -40°C to +85°C                    |        |

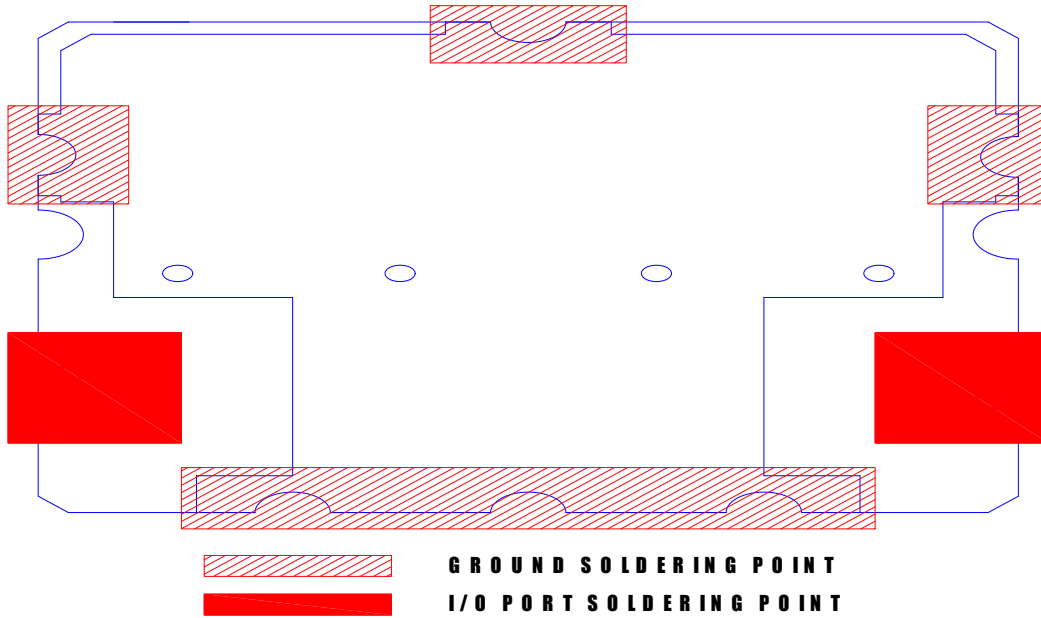
Mechanical Specification



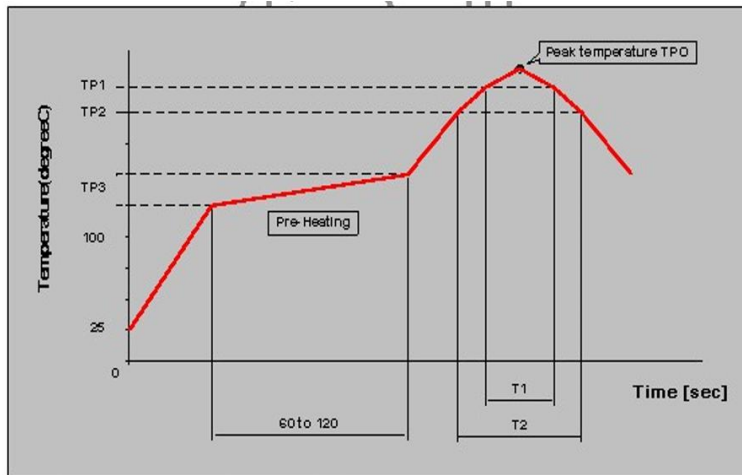
## Plot Data



Recommneded PC Board Pattern



Soldering Condition



Measuring point of temperature : IN-OUT Terminals of The Device

Reflow Soldering : Both Convection and Infrared Rays, Hot Air and Hot Plate

| Reflow standard condition                | TPO (°C) | TP1 (°C) | T1 (s)   | TP2 (°C) | T2 (s) | TP3 (°C)   |
|------------------------------------------|----------|----------|----------|----------|--------|------------|
| Sn-3Ag-0.5 solder                        | 245±5    | 220      | 30 to 60 | —        | —      | 150 to 180 |
| Test condition of reflow heat resistance | 260±5/-0 | 240      | 20       | 220      | 70     | 150 to 180 |