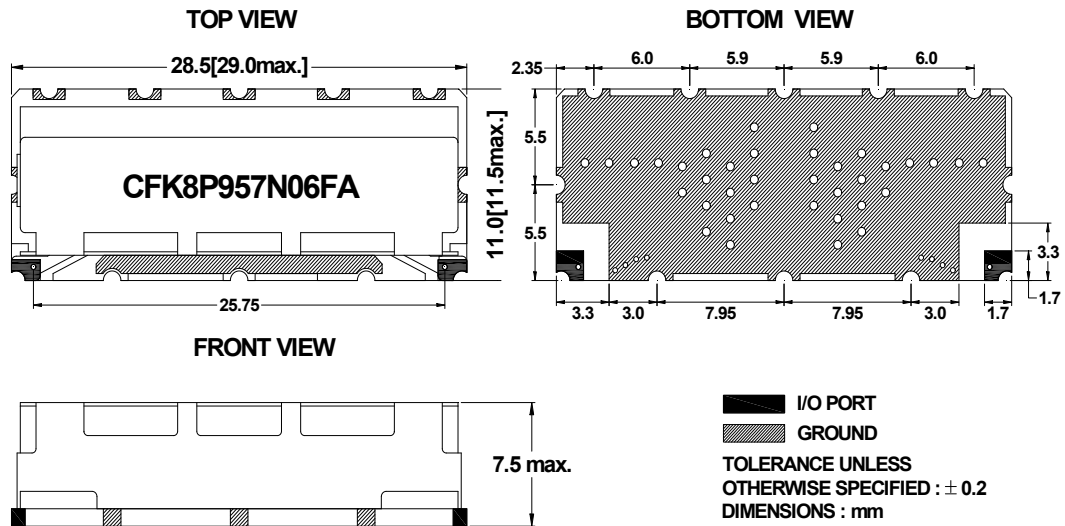


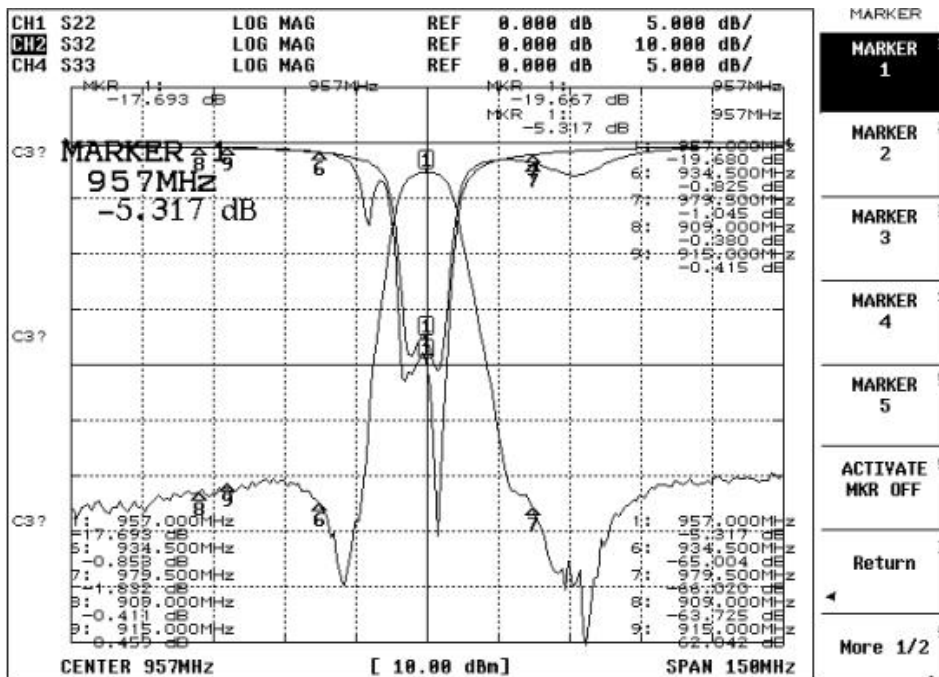
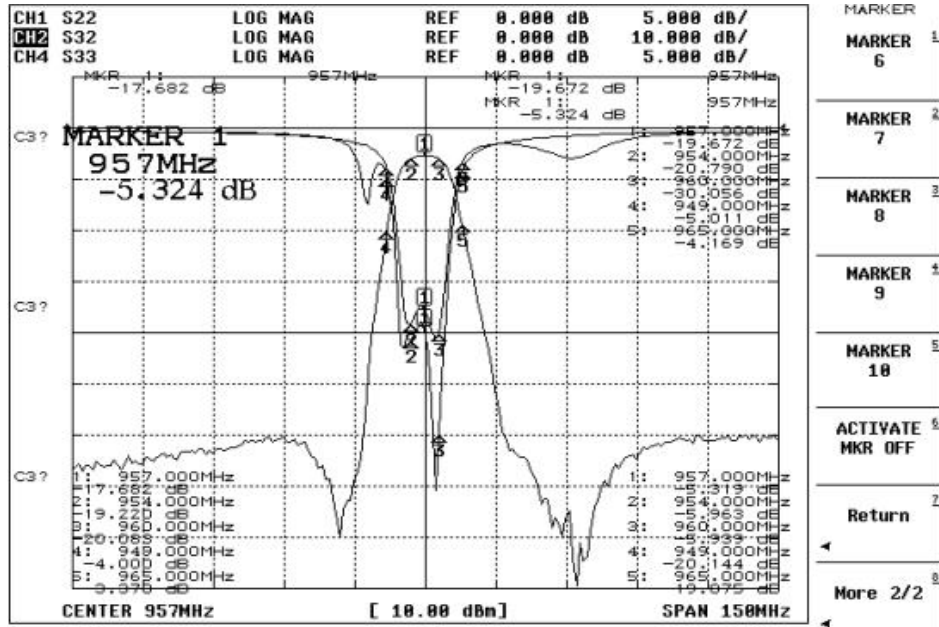
Electrical Specification

ITEMS	SPEC	UNIT
Center Frequency [fo]	957.0	MHz
Bandwidth [BW]	fo±3.0 [954 ~960]	MHz
Insertion Loss in BW	7.0	dB max
Ripple in BW	2.0	dB max
Return Loss in BW		dB min
Attenuation <input type="checkbox"/> Absolute Value <input checked="" type="checkbox"/> Relative Value	13.0 dBc min. @ fo ± 8.0 [949.0 & 965.0]	MHz
	55.0 dBc min. @ fo ± 22.5[934.5 &979.5]	MHz
	55.0 dBc min. @ fo ± [909.0 & 915.0]	MHz
	dB min @ fo ± [~]	MHz
Group Delay Variation		ns max
Input Power	2	W max.
In/Out Impedance	50 Ω	
Operation Temperature Range	-40°C to +85°C	

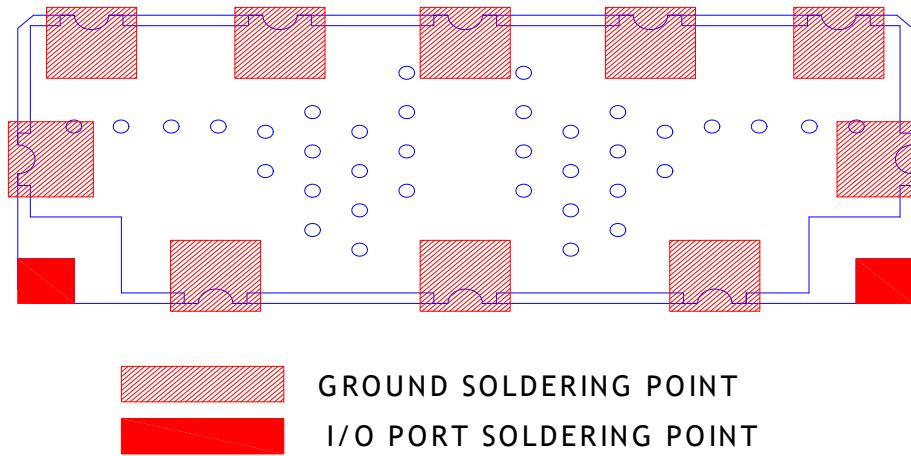
Mechanical Specification



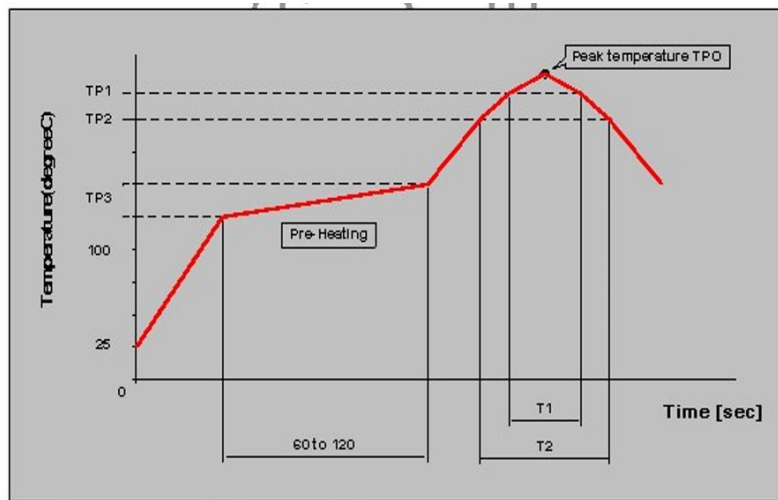
Plot Data



Recommneded PC Board Pattern



Soldering Condition



Reflow standard condition	TPO (°C)	TP1 (°C)	T1 (s)	TP2 (°C)	T2 (s)	TP3 (°C)
Sn-3Ag-0.5 solder	245+/-5	220	30 to 60	—	—	150 to 180
Test condition of reflow heat resistance	260+5/-0	240	20	220	70	150 to 180