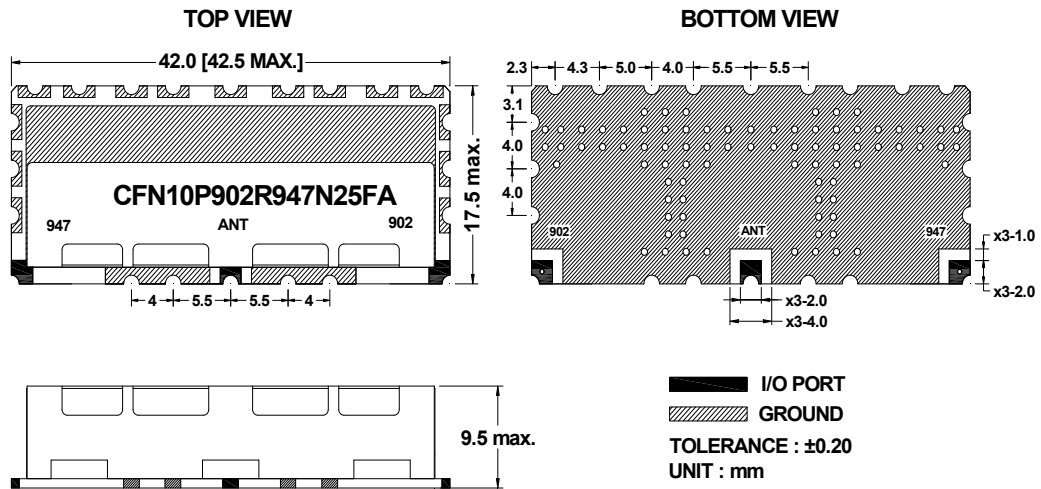


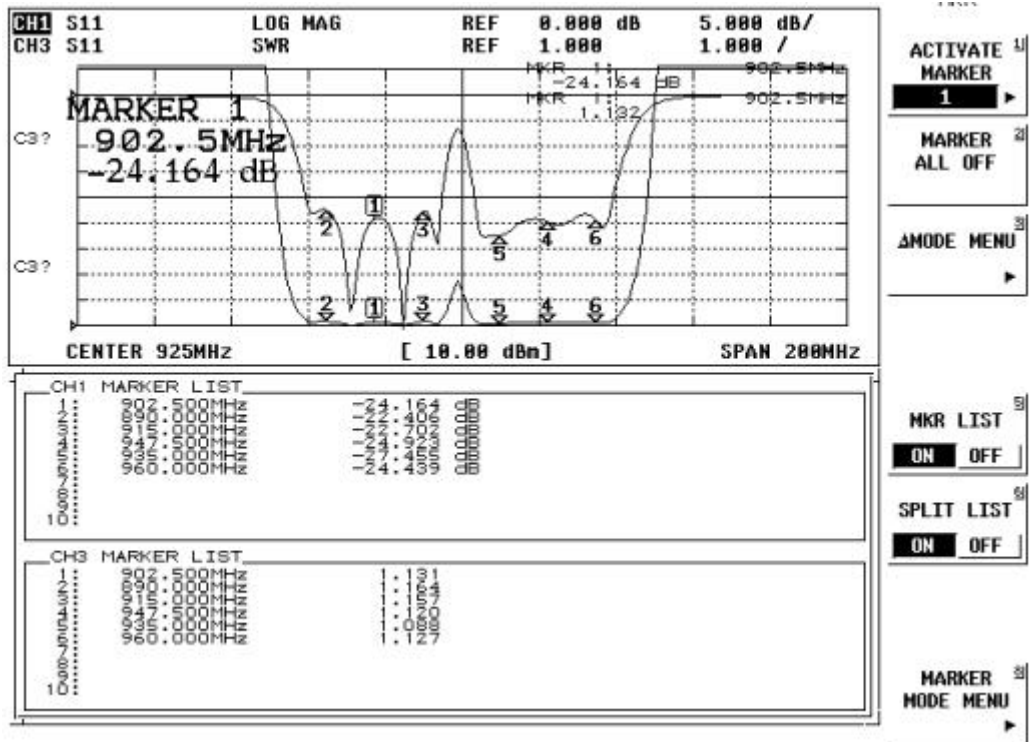
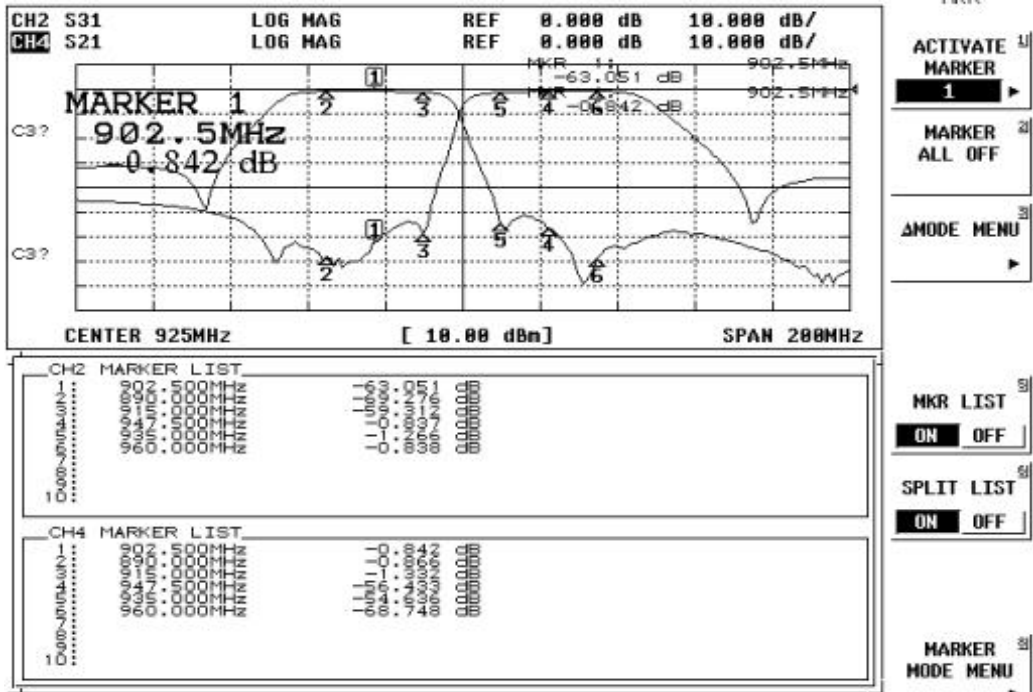
Electrical Specification

ITEMS	ANT >> Low	ANT >> High	UNIT
Center Frequency [fo]	902.5	947.5	MHz
Bandwidth [BW]	fo ±12.50[890.0 ~915.0]	fo ±12.50[935.0 ~960.0]	MHz
Insertion Loss in BW	1.5	1.5	dB max
Ripple in BW	1.0	1.0	dB max
Return Loss in BW			dB min
Attenuation <input checked="" type="checkbox"/> Absolute Value <input type="checkbox"/> Relative Value	50.0 dB min. @[935 ~960]	50.0 dB min. @[890 ~915]	MHz
	dB min. @ [~]	dB min. @ [~]	MHz
	dB min. @ [~]	dB min. @ [~]	MHz
	dB min. @ [~]	dB min. @ [~]	MHz
Group Delay Variation			ns max
Input Power	2.0		W max.
In/Out Impedance	50 Ω		
Operation Temperature Range	-40°C to +85°C		

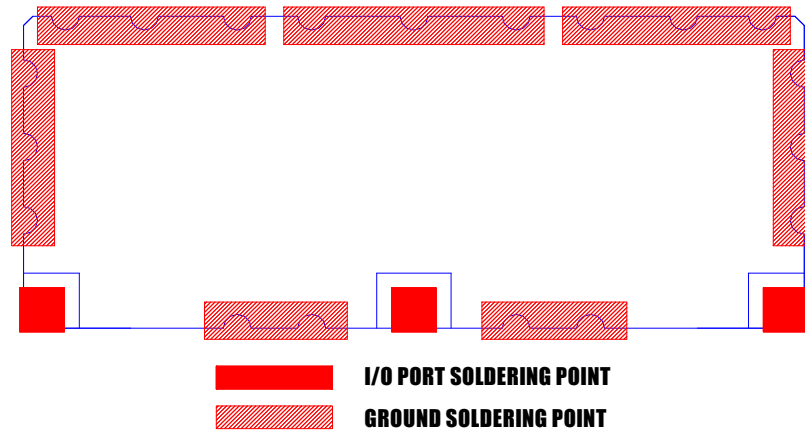
Mechanical Specification



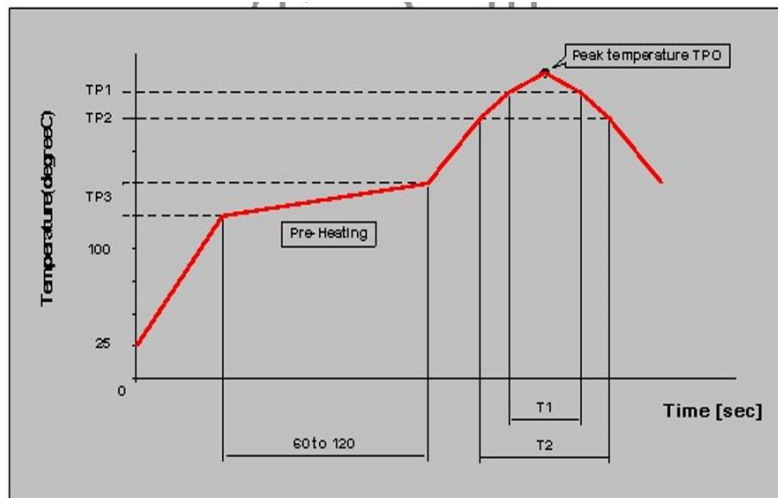
Plot Data



Recommneded PC Board Pattern



Soldering Condition



Reflow standard condition	TP0 (°C)	TP1 (°C)	T1 (s)	TP2 (°C)	T2 (s)	TP3 (°C)
Sn-3Ag-0.5 solder	245±/5	220	30 to 60	—	—	150 to 180
Test condition of reflow heat resistance	260+5/-0	240	20	220	70	150 to 180